

1. Full Auto Update

Preparation:

- Obtain the latest release package (NC_S2_RP*.**_Service) and store it in a local drive on your computer.
- Change to the Version File contained in the release package
- Display the UPDATE screen.

Perform the update by adhering to the following warnings. If you do not adhere to these warnings, there is a risk that the projector will no longer be able to start correctly.

- Do not turn off the main power to the projector during the update.
- Do not turn off the PC during the update. Turn power saving functions off.
- Do not disconnect the LAN cable connecting the PC and projector main unit during the update.

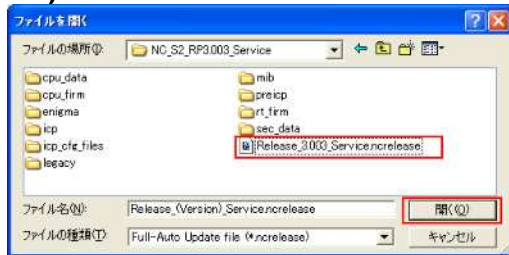
1-1) Click the “Check” button in “Check Version” in the UPDATE screen.

The Check Version screen is displayed.

1-2) Click the “Full Auto Update” button in the “Full-Auto” tab.

A confirmation dialog is displayed.



1-3) Check that the latest Release File is displayed in Release Package.

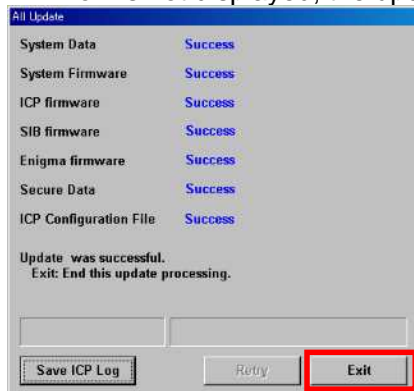
The Release File is displayed as “Release_(Version)_Service.ncrelease”.

A progress bar is displayed and the update begins. The update proceeds automatically.

When the update has finished, the All Update screen is displayed.

1-4) Check the results of the update.

If “Error” is not displayed, the update has completed successfully. Proceed to step 1-5.



If the ICP firmware update fails, the “Retry” button is enabled. Click the “Retry” button to execute the update again. If the update fails again, click the “Save ICP Log” button to save the log from when the update was executed.

After the log has been saved, click the “Exit” button to cancel the update. Next, contact your distributor (and provide them with the log you saved).

1-5) Once the update is successful, click the “Exit” button.**1-6) Check that all of the Check Version results are “OK”, and then click the “Update End” button in the “Full Auto” tab.**

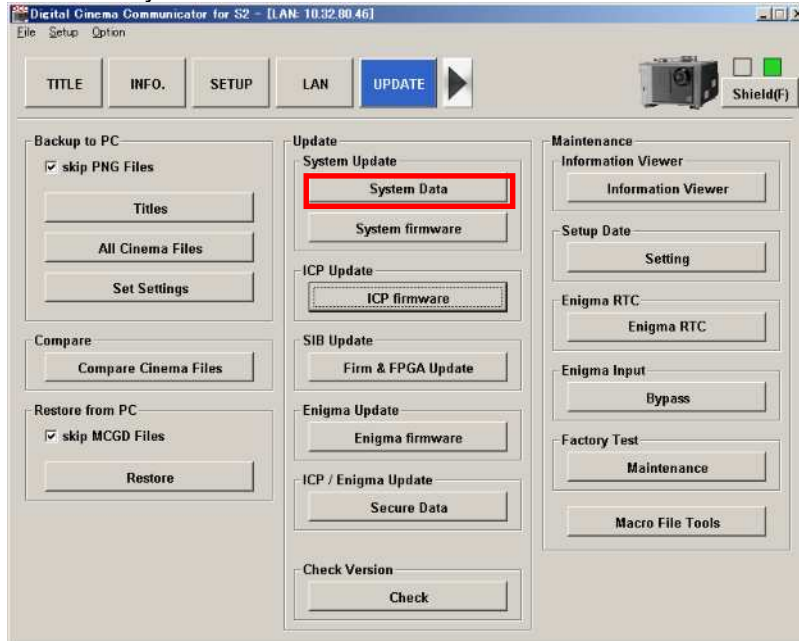
Once the projector enters standby mode, the update is complete.

If Different is displayed

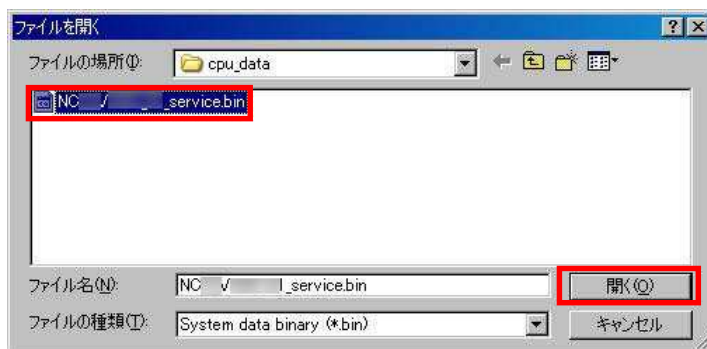
Click the “Update End” button in the “Full Auto” tab. When the projector enters standby mode, return to step 1-2) and execute the update again.

2. Update when change the CPU board

2-1) Click on “System Data” button.



2-2) Select the file in accord with a model written in Release List of “DATA”

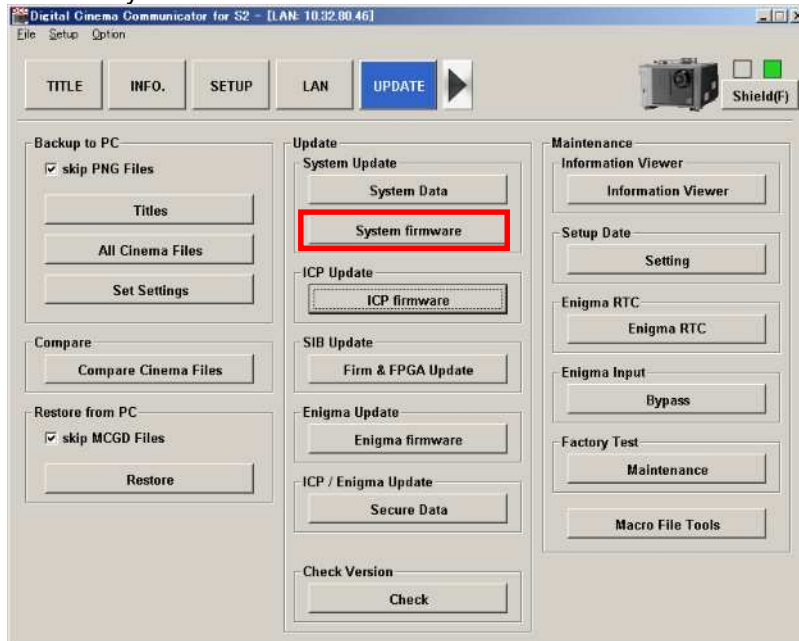
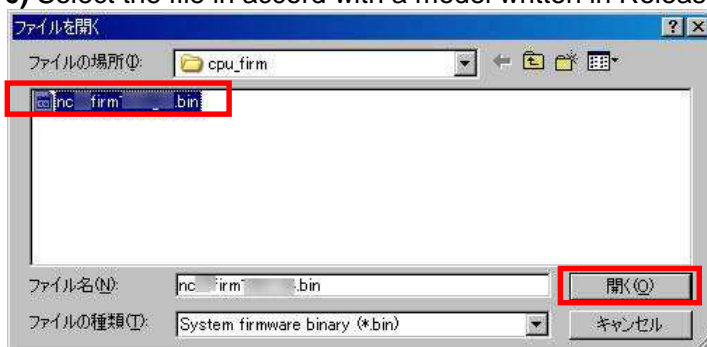
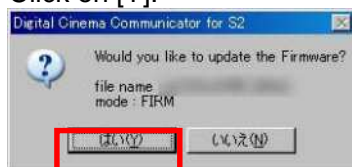


2-3) Progress bar is showing during update.

2-4) When the completion of the update, the next message is showing.

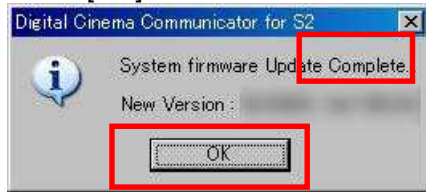
Click on [OK].



2-5) Click on “System firmware button.**2-6) Select the file in accord with a model written in Release List of “FIRM”****2-7) Click on [Y].****2-8) Progress bar is showing during update.**

2-9) When update finish, the next message is showing.

Click on [OK].



2-10) Close the DCC program with click the following button.



2-11) Launch up the DCC again for DCC read the CPU model

2-12) Check the System name projector model in START window.

If model is not correct, back to step 2-1)



2-13) Go to 1.Full Auto Update for update the all system of projector.